



Yamhill-Carlton AVA

Press Kit

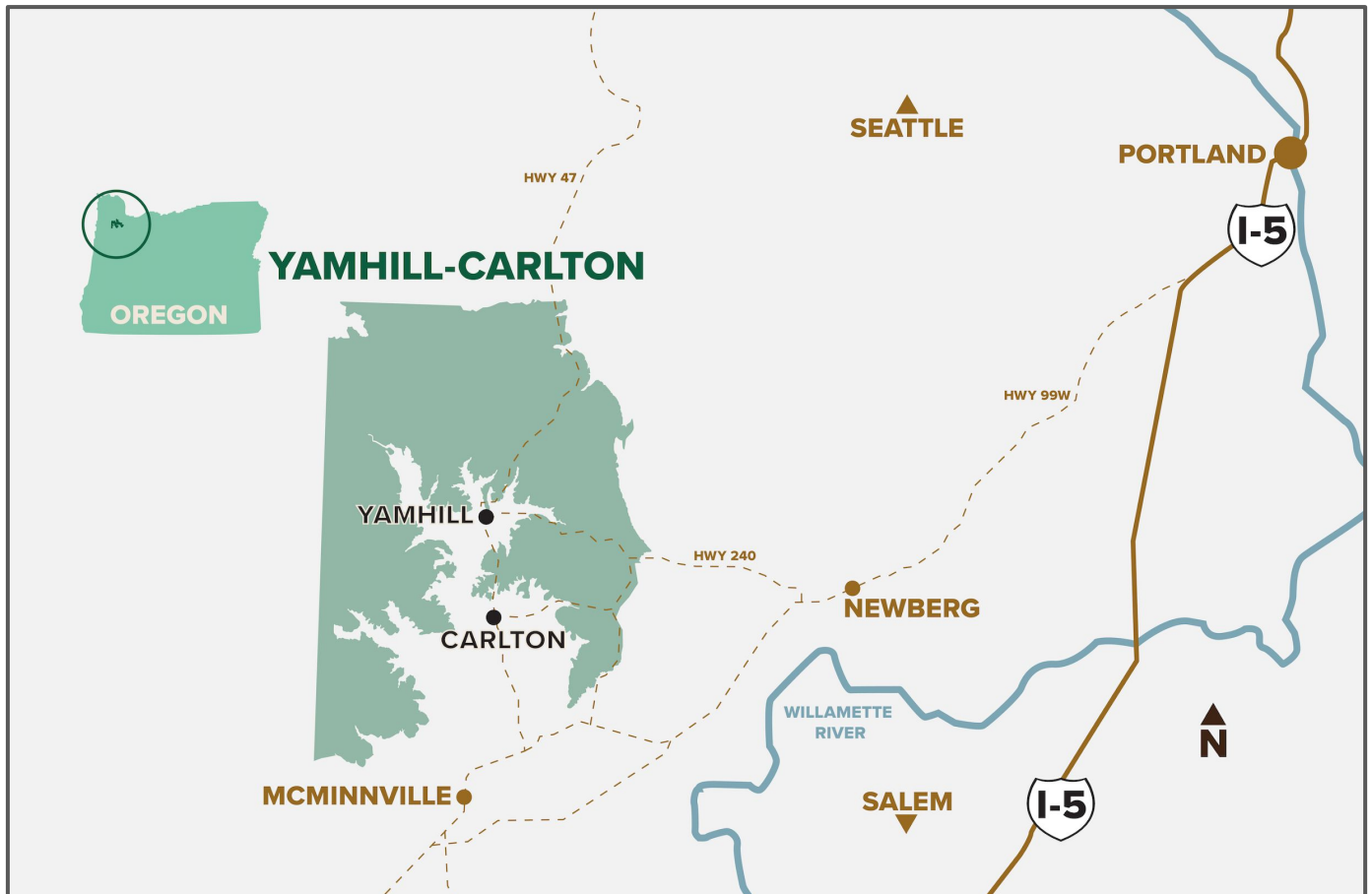
2024



Press contact: Kayt Mathers kayt@playnicepr.com

“Arguably the most beautiful area of the Willamette Valley”

- The Washington Post



Map by Vinbound

Yamhill-Carlton is a nested AVA in Oregon's Willamette Valley. This horseshoe-shaped region is distinguished by its warmth and its ancient sedimentary soils, creating wines of character with an unmistakable sense of place. Wineries in Yamhill-Carlton are predominantly family owned and operated, producing wines that emphasize quality over quantity. Named for the two hamlets of Yamhill and Carlton, the region has become a destination for wine lovers, collectors, and culinary travelers alike. With its picture-perfect patchwork of vineyards, Yamhill-Carlton produces some of the finest Pinot Noir in the world.

A Horseshoe of Sedimentary Soils

Yamhill-Carlton is a south-facing, horseshoe-shaped viticultural area comprising 58,100 acres, with almost 2,500 acres planted to vineyards. Yamhill-Carlton's unique soil and parent material composition, climate and positioning within the larger region, led to the establishment of a nesting AVA in 2004. Yamhill-Carlton was one of the first six established sub-appellations within the greater Willamette Valley winemaking region.

Yamhill-Carlton is characterized by its coarse sedimentary soils formed in the Eocene era, between 50 to 40 million years ago, making it the oldest parent material in the Willamette Valley. These sedimentary soils were derived from ocean floor sediments, a unique composition that provides moderate water-holding capacity and excellent drainage. This enhances grape ripening and leads to softer tannins and well-balanced acids in the wines.

Yamhill-Carlton's borders were drawn according to its own set of distinguishing features, but also according to neighboring changes in climate and geology. To the west is the Coast Range, a higher-elevation area that transitions abruptly into volcanic soils. To the northeast lie Ribbon Ridge and the Chehalem Mountains, both cooler and with different geological compositions. To the south, a lower elevation area is typified by deep soils of Willamette silts. The unique position of Yamhill-Carlton, then, contributes to a wine profile that is distinct from its neighboring AVAs.

Elevation is another important consideration in Yamhill-Carlton. Planted on hillsides and ridges, only vineyards lying between 200 feet and 1,000 feet above sea level can be labeled with the designation. At these elevations, fruit reaches full physiological ripeness, resulting in complex, expressive and ageable Pinot Noir.

Yamhill-Carlton is warmer and receives less precipitation than its neighbors. Significant diurnal temperature shifts in the summer, during the final stretch of the growing season, encourage thick, flavorful skins, and optimal ripeness. The AVA averages around 42" of rainfall per year and Growing Degree Days average approximately 2300 degrees, ideal for premium grape-growing.



Fifty Million Years in The Making

A series of geological events taking place over the last 50 million years resulted in the unique parent material of what is now Yamhill-Carlton. However, the process that resulted in the oldest mother rock in the Willamette Valley started much earlier than that, more than 200 million years ago, with the subduction of the San Juan de Fuca Plate under the continental plate. As the Juan de Fuca Plate scraped against the Pacific coastline, an ongoing pillowing effect created an accumulation of sediments and ancient sands.

Fifteen million years ago, before the formation of the Cascade Mountain Range, the violently active Blue Mountains to the east continuously poured lava west. The unhindered activity covered the existing sand with a veneer of lava, cooling to basalt. The Missoula Floods, a final geological play with more than forty acts, deposited layers of silt in the low-lying valley areas of the Yamhill-Carlton region over ten thousand years ago.

The major geological events of the volcanic Blue Mountains and the Juan de Fuca Plate come to life in older vineyards, where vines' root systems engage with the parent material, reaching deep beyond the soil that developed on top of marine sediments. When vines are deeply rooted (at 30 to 35 feet), the identity of place becomes apparent. The sedimentary soil series of Yamhill-Carlton are millions of years older than the soil series in the surrounding areas, an asset that was discovered in the mid-1990s (see Timeline below).

The influence of geology has, unquestionably, the greatest impact on the wines from Yamhill-Carlton, especially Pinot Noir. Unlike other varieties that have a varietal quality that can override place, Pinot Noir is a transparent grape, a blank canvas that makes a direct connection to a place.

Yamhill-Carlton Timeline

50 to 40 million years ago: Creation of Yamhill-Carlton's parent material

1891: Incorporation of the town of Yamhill

1899: Incorporation of the town of Carlton

1936: The two small farming communities of Yamhill and Carlton come together

1974: First two vineyards planted in what would become Yamhill-Carlton AVA

1991: First vintage at Shea Vineyard, the largest vineyard in Yamhill-Carlton, which quickly became the poster child for the region's potential

1991: Burgundy native Bernard Lacroute purchases the 420-acre site that would become WillaKenzie Estate, in the first example of foreign investment in the region

1994: Ken Wright Cellars moves to Carlton from McMinnville, moving closer to Shea Vineyard and other sites that would greatly influence the positive perception of the region

1994: Wines made from Yamhill-Carlton fruit are the top-scoring wines from Oregon in Wine Spectator, bringing attention to the region's potential

Mid-1990s: Yamhill-Carlton experiences significant expansion as more winemakers discover the ideal combination of the region's geology and climate

1995: Willamette Valley winemakers meet for the first time to collaborate on the forming of nested AVAs within the larger region

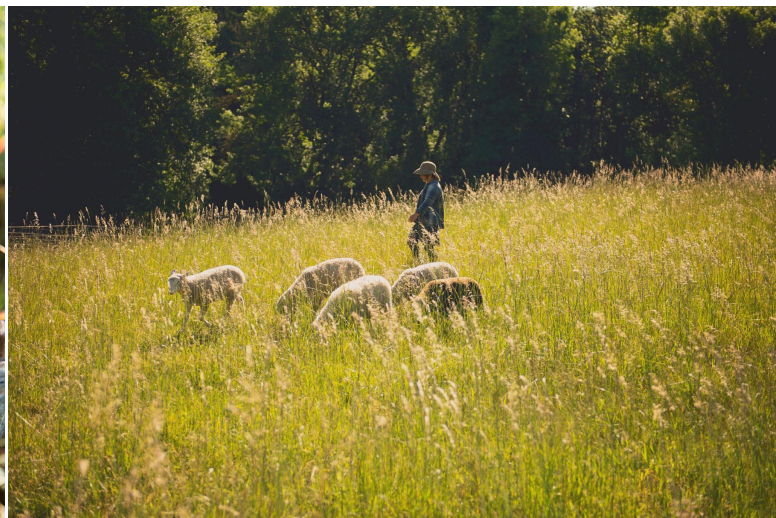
2004: Yamhill-Carlton awarded AVA status, one of the first six nested AVAs within the Willamette Valley

A Down to Earth Winemaking Community

Yamhill-Carlton is home to more than 50 wineries and 100 vineyards, mostly family owned and operated. “Down to Earth” is the AVA’s motto, a nod to the region’s unique sedimentary soils and the unassuming nature of its winemakers and grape-growers. A collaborative spirit prevails among winemakers in Yamhill-Carlton, whose generosity and unassuming nature contribute to a regional commitment to quality and excellence.

Against a backdrop of rolling pasture and forestland, the first vineyards in Yamhill-Carlton were planted in 1974. These grape-growing pioneers joined Yamhill-Carlton farmers and ranchers descended from early Oregon Trail pioneers, drawn to this pastoral corner of the northern Willamette Valley rich with opportunity. Those first vineyards paved the way for wineries that have shaped the identity of the Yamhill-Carlton region, one that is collegial and forward-thinking.

The region is named for the small hamlets of Yamhill and Carlton, two dynamic communities surrounded on three sides by hillside vineyards. Carlton, with its charming main street lined with tasting rooms, cafés and shops, has become the unofficial hub of Yamhill-Carlton and an important destination in the Willamette Valley.



Photos: Carolyn Wells-Kramer

Hospitality and excellence are at the heart of the tasting experience in Yamhill-Carlton. More than 50 wineries welcome visitors for wine tastings in intimate settings; many of the smaller wineries in the region offer tastings in the winemaker’s own home. Many tasting rooms in Yamhill-Carlton are family and dog-friendly, and a growing number of wineries boast electric vehicle charging stations. In the summer, visitors enjoy wines on outdoor patios overlooking vineyards and forestland, and in the winter, many tasting rooms are warmed with cozy fireplaces. An increasing number of tasting rooms offer food pairings and à la carte menus, while others encourage picnics.

A growing number of restaurants and wine country accommodations add allure to Yamhill-Carlton, where visitors find plenty to see, taste and experience.

Wines of Character and Global Distinction

There are three main varieties grown in Yamhill-Carlton: Pinot Noir, Chardonnay and Pinot Gris. Smaller plantings of Gamay, Riesling, Sauvignon Blanc, Cabernet Franc, Pinot Blanc, Dolcetto, and other varieties are also farmed. The region produces red, white, rosé, and sparkling wines.

Grapes grown in Yamhill-Carlton's ancient sedimentary soils are lower in acid than wines made from grapes grown in basaltic or wind-blown soils. In general, wines made from these grapes have a firm tannic backbone and age beautifully. Wines from Yamhill-Carlton are texturally driven and have distinct aromatic flavors: in Pinot Noir, coffee, cocoa, anise, cedar, and tobacco are common aromas, and in Chardonnay, minerality and floral notes are common.

Perhaps more than any other variety, Pinot Noir has an incredible propensity for expressing the place in which it is grown. Pinot Noir wines produced in Yamhill-Carlton receive consistent domestic and global acclaim; a growing number of Chardonnay wines made in the AVA are earning equally high praise.

What's New in Yamhill-Carlton

Sparkling wines: A growing number of wineries in Yamhill-Carlton are adding sparkling wines to their lineups. From *méthode champenoise* to *méthode ancestrale*, winemakers are finding great success with sparkling wines made from Pinot Noir, Chardonnay, Pinot Meunier, Sauvignon Blanc, and other varieties.

New varieties: While Pinot Noir and Chardonnay remain the most planted varieties in the region, vineyards throughout Yamhill-Carlton are seeing more plantings of Riesling, Sauvignon Blanc, Dolcetto, Albariño, Marquette, and many others.

The Carlton hub: The small hamlet of Carlton is home to more than a dozen wineries, all within a stone's throw of each other. New tasting rooms in town include Big Table Farm and Tendril Wines, while Résonance, the new venture owned by the Louis Jadot family, is a short drive from Main Street.

Vineyard stays: A number of vineyards and wineries in the region offer guest houses for overnight stays, while the recently opened Abbey Road Farm, an 82-acre working farm and winery, offers five guest suites and one of the best breakfasts in Oregon.

Boutique wineries: Yamhill-Carlton is home to more than 50 wineries, many of them producing fewer than 1,000 cases per year. Boutique wineries like Atticus Wine, Sylvanus Estate and Stag Hollow Wines offer personal tasting experiences, often around the winemaker's kitchen table.



Yamhill-Carlton AVA Fact Sheet

Location:	Willamette Valley, Oregon
Planted acres:	2,846 acres
Geology:	Silt-loam marine sedimentary soils
Climate:	Cool-summer Mediterranean
Elevation:	200 to 1,000 feet above sea level
Wineries:	63
Vineyards:	126
Primary grapes:	Pinot Noir Chardonnay Pinot Gris
Website:	yamhillcarlton.org
Social media:	Instagram: @yamhillcarlton Facebook: @YamhillCarltonWine



Yamhill-Carlton AVA Winery Members

ABBEEY ROAD FARM	ELK COVE VINEYARDS	PENNER-ASH WINE CELLARS
ABBOTT CLAIM	ET FILLE WINES	PHEASANT HILL VINEYARD
AMATERRA WINES	FAIRSING VINEYARD	PIKE ROAD WINES
ANNE AMIE VINEYARDS	GHOST HILL CELLARS	R. STUART & CO. WINERY
ASILDA WINES	GRAN MORAINÉ	RÉSONANCE WINES
ATTICUS WINE	J.L. KIFF VINEYARD	ROOTS WINE COMPANY
BEACON HILL VINEYARD & WINERY	JOYFUL NOISE WINE	SAFFRON FIELDS VINEYARD
BELLE PENTE WINERY	KEN WRIGHT CELLARS	SCHÖNETAL CELLARS
BIG TABLE FARM	KRAMER VINEYARDS	SHEA WINE CELLARS
BLACK DOG VINEYARD	KRISTOF FARMS	SIMONI FAMILY VINEYARDS
BOEDECKER CELLARS	LA RANDONNÉE WINES	SOLÉNA ESTATE
CARLTON HILL VINEYARD	LANDLINES ESTATES	SOKOL BLOSSER WINERY
CHRIS JAMES CELLARS	LAUREL RIDGE WINERY	SOTER VINEYARDS
CRAFT WINE CO.	LEMELSON VINEYARDS	STAG HOLLOW WINES
DENISON CELLARS	MARSHALL DAVIS WINE	SYLVANUS ESTATE
DIVISION WINEMAKING CO.	MONKSGATE VINEYARD & WINES	TENDRIL WINE CELLARS
DOMAINE VERDANT	NICOLAS-JAY	THE FOUR GRACES
DOMINIO IV WINES	NORTH VALLEY VINEYARDS	WAHLE CELLARS
EIEIO & COMPANY		WILLAKENZIE ESTATE

Yamhill-Carlton AVA Vineyard Members

Abbey Road Farm	Greyhorse Vineyard	Purple Chicken Vineyard
Abbott Claim Vineyard	Guglielmelli Vineyards	Quandary Vineyards
Anne Amie Vineyards	Haven Vineyards	Rainbow Ridge Vineyard
Atticus Vineyard	Hirschy Vineyard	Résonance Vineyard
Bayliss-Bower Vineyard	J.L. Kiff Vineyard	Rivenwood Vineyard
Beacon Hill Vineyard	Johnson Vineyard	Rocky Noel Vineyard
Belle Pente Vineyard	Jolis Monts Vineyard	Roots Vineyard
Big Table Farm	Kalita Vineyard	Rose Knoll Vineyard
Bishop Creek Vineyard	Kramer Vineyards	Saffron Fields Vineyard
Bishop Scott Ranch	Kristof Farms	Savoya Vineyard
Black Dog Vineyard	Laughlin Road Vineyard	Shallow-Blue-Sea Vineyard
Bonnie Jean Vineyard	Lonely Llama Vineyard	Shea Vineyards
Carlton Hill Vineyard	Marsh Estate Vineyards	Simoni Family Vineyards
Caroline Vineyard	Marshall Davis Vineyard	Sisu Vineyard
Cassin Family Vineyards	Matteri Vineyards	Soléna Estate Vineyard
Coats and Whitney Vineyard	Maverick Vineyard	Stag Hollow Vineyard
Contrada Santa Caterina	McCrone Vineyard	Stermer Vineyard
Deux Vert Vineyard	Mineral Springs Ranch	Sylvanus Estate Vineyard
Doe Ridge Vineyard	MonksGate Vineyard	Tanager Vineyard
Elk Cove Estate	Mount Richmond Vineyard	Tidalstar Vineyard
Fairsing Vineyard	Nash Vineyard	Timbale & Thyme Vineyard
Finn Hill Vineyard	Neigut Vineyard	Tres Colline Vineyards
Fir Crest Vineyard	North Valley Vineyards	TSAI Vineyard
FoxyRock Vineyards	Old Wagon Road Vineyard	Two Mules Vineyards
Goodrich Road Vineyard	Orchard View Vineyard	WillaKenzie Estate
Gran Moraine Estate	Penner-Ash Estate	Yamhill Vineyards
Grey State Vineyards	Pheasant Hill Vineyard	Yates-Conwill Vineyard